



# inox 316

La serie "MPG" è realizzata in acciaio inox 316 L (DIN 1.4404) spessore 5/10 e 4/10 con guarnizione siliconica nera a triplo labbro fornita di serie fino al diametro 150.

Il sistema di giunzione è di tipo maschio/femmina, mentre il sistema di saldatura è longitudinale continuo al TIG o PLASMA.

Il canale da fumo, come il condotto fumario è idoneo per l'evacuazione dei fumi condensati o secchi per funzionamento in pressione positiva o negativa.

Le temperature max di esercizio sono, per funzionamento in P1 a 200° C con guarnizione, mentre per funzionamento in N1 a 600° C senza guarnizione.

Ammessi combustibili gassosi e liquidi con funzionamento a secco e umido. Combustibili solidi con funzionamento a secco.

The "MPG" series is made of 316 L (DIN 14404) thickness 5/10 and 4/10 with black silicone gasket coming standard up to diameter 150.

The joint system is of male/female type, while the welding system is longitudinal continuous to TIG or PLASMA.

The connecting flue pipe, such as the flue liner, are suitable for the evacuation of condensed or dried smokes for operations in positive or negative pressure.

Maximum operating temperatures are 200°C with gasket for operations in P1, while 600 °C without gasket for N1 operations.

Gaseous and liquid fuels are allowed with dry and wet running.

Solid fuels only with dry running.

La série "MPG" est réalisée en acier inoxydable 316 L (DIN 14404) épaisseur 5/10 et 4/10 avec joint en silicone noir fourni de série jusqu'au diamètre 150.

Le système de jonction est de type mâle / femelle tandis que le système de soudage est longitudinal continu au TIG ou au PLASMA.

Le canal de fumée et même le conduit sont adaptés pour l'évacuation des condensats ou des fumées sèches aussi bien en pression positive que négative.

Les températures maximales de fonctionnement avec joint en P1 sont de 200°C tandis qu'elles sont de 600°C pour un fonctionnement N1 sans joint.

Les combustibles gazeux et liquides sont admis pour un fonctionnement à sec ou humide; par contre les combustibles solides nécessitent d'un fonctionnement à sec.

**ELEMENTO LINEARE SP. 5/10 - STRAIGHT ELEMENT TH. 5/10 - LONGUEUR DROITE ÉP. 5/10**

Lunghezza / Length / Longueur: 1000 mm

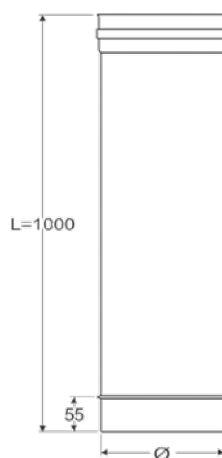
Cod. / Code / Réf.	N°	Ø
MPG60X1000	1	*60
MPG80X1000	16	*80
MPG100X1000	10	*100
MPG120X1000	9	*120
MPG130X1000	8	*130
MPG140X1000	7	*140
MPG150X1000	5	*150
MPG160X1000	5	160
MPG180X1000	4	180
MPG200X1000	6	200
MPG220X1000	5	220
MPG250X1000	6	250
MPG300X1000	3	300
MPG350X1000	1	350
MPG400X1000	1	400
MPG450X1000	1	450
MPG500X1000	1	500

Lunghezza / Length / Longueur: 500 mm

MPG60X500	2	*60
MPG80X500	2	*80
MPG100X500	2	*100
MPG120X500	2	*120
MPG130X500	2	*130
MPG140X500	2	*140
MPG150X500	2	*150
MPG160X500	2	160
MPG180X500	2	180
MPG200X500	2	200
MPG220X500	2	220
MPG250X500	2	250
MPG300X500	2	300
MPG350X500	1	350
MPG400X500	1	400
MPG450X500	1	450
MPG500X500	1	500

Lunghezza / Length / Longueur: 250 mm

MPG60X250	2	*60
MPG80X250	2	*80
MPG100X250	2	*100
MPG120X250	2	*120
MPG130X250	2	*130
MPG140X250	2	*140
MPG150X250	2	*150
MPG160X250	2	160
MPG180X250	2	180
MPG200X250	2	200
MPG220X250	2	220
MPG250X250	2	250
MPG300X250	2	300
MPG350X250	1	350
MPG400X250	1	400
MPG450X250	1	450
MPG500X250	1	500



\* Guarnizione inclusa / Gasket included / Joint d'étanchéité compris

Lunghezza / Length / Longueur: 1000 mm

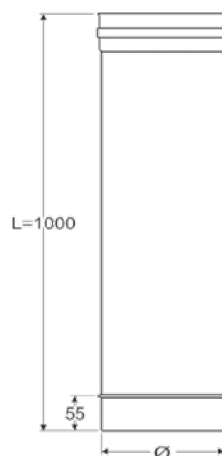
Cod. / Code / Réf.	N°	Ø
LMPG80X1000	16	*80
LMPG100X1000	10	*100
LMPG120X1000	9	*120
LMPG130X1000	8	*130
LMPG140X1000	7	*140
LMPG150X1000	5	*150
LMPG160X1000	5	160
LMPG180X1000	4	180
LMPG200X1000	6	200
LMPG220X1000	5	220
LMPG250X1000	6	250

Lunghezza / Length / Longueur: 500 mm

LMPG80X500	2	*80
LMPG100X500	2	*100
LMPG120X500	2	*120
LMPG130X500	2	*130
LMPG140X500	2	*140
LMPG150X500	2	*150
LMPG160X500	2	160
LMPG180X500	2	180
LMPG200X500	2	200
LMPG220X500	2	220
LMPG250X500	2	250

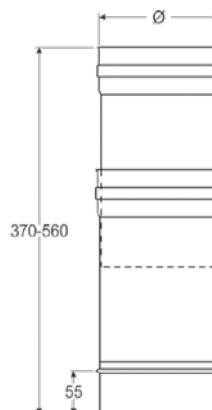
Lunghezza / Length / Longueur: 250 mm

LMPG80X250	2	*80
LMPG100X250	2	*100
LMPG120X250	2	*120
LMPG130X250	2	*130
LMPG140X250	2	*140
LMPG150X250	2	*150
LMPG160X250	2	160
LMPG180X250	2	180
LMPG200X250	2	200
LMPG220X250	2	220
LMPG250X250	2	250



ELEMENTO TELESCOPICO - ADJUSTABLE PIPE - LONGUEUR DROITE AJUSTABLE

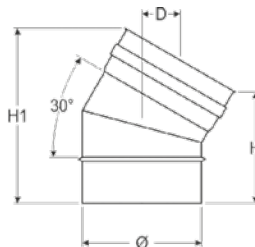
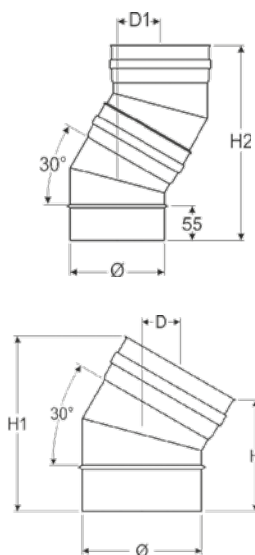
Cod. / Code / Réf.	Ø
MPGT80	*80
MPGT100	*100
MPGT120	*120
MPGT130	*130
MPGT140	*140
MPGT150	*150
MPGT160	160
MPGT180	180
MPGT200	200
MPGT220	220
MPGT250	250
MPGT300	300
MPGT350	350



**Diametri differenti a richiesta** - Custom diameters on request - Diamètres différents sur demande  
 \* **Guarnizione inclusa** / Gasket included / Joint d'étanchéité compris

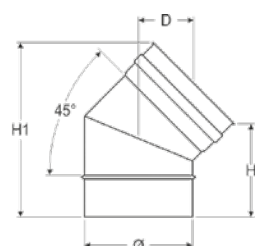
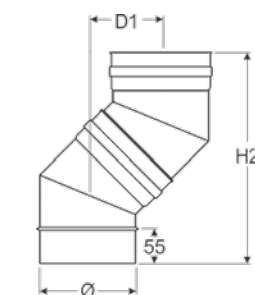
## CURVA 30° - 30° ELBOW - COUDE À 30°

Cod. / Code / Réf.	N°	Ø	H	H1	H2	D	D1	N° SET
MPGC80/30	2	*80	138	183	274	43	59	2
MPGC100/30	2	*100	140	195	290	45	64	2
MPGC120/30	2	*120	137	202	292	46	64	2
MPGC130/30	2	*130	143	208	303	47	66	2
MPGC140/30	2	*140	140	210	302	47	66	2
MPGC150/30	2	*150	142	217	311	48	69	2
MPGC160/30	2	160	141	221	314	48	69	2
MPGC180/30	2	180	141	231	324	50	72	2
MPGC200/30	2	200	162	262	377	57	86	2
MPGC220/30	2	220	142	252	346	53	78	2
MPGC250/30	2	250	150	275	378	57	87	2
MPGC300/30	2	300	139	289	380	57	87	2
MPGC350/30	1	350	144	319	415	62	96	2
MPGC400/30	1	400	142	342	436	65	102	2
MPGC450/30	1	450	142	367	461	68	109	2
MPGC500/30	1	500	149	399	501	73	119	2



## CURVA 45° - 45° ELBOW - COUDE À 45°

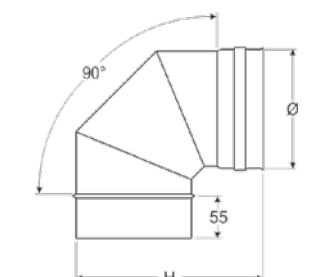
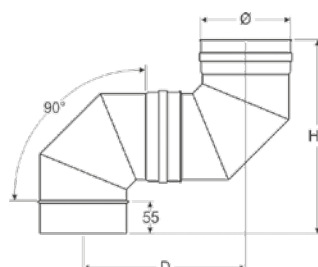
Cod. / Code / Réf.	N°	Ø	H	H1	H2	D	D1	N° SET
MPGC60/45	2	*60	119	162	243	58	78	2
MPGC80/45	2	*80	125	189	275	63	91	2
MPGC100/45	2	*100	128	206	295	69	99	2
MPGC120/45	2	*120	133	225	319	74	109	2
MPGC130/45	2	*130	128	220	309	72	105	2
MPGC140/45	2	*140	128	227	316	74	108	2
MPGC150/45	2	*150	132	238	332	77	115	2
MPGC160/45	2	160	119	233	313	73	107	2
MPGC180/45	2	180	137	264	362	83	127	2
MPGC200/45	2	200	131	273	365	84	129	2
MPGC220/45	2	220	137	292	390	89	139	2
MPGC250/45	2	250	130	308	401	91	143	2
MPGC300/45	2	300	137	349	446	100	162	2
MPGC350/45	1	350	137	384	482	108	177	2
MPGC400/45	1	400	133	416	510	114	189	2
MPGC450/45	1	450	128	446	535	119	199	2
MPGC500/45	1	500	224	577	762	166	293	3



Dal Ø 80 al Ø 200 Sp. 0,4 mm - From Ø 80 to Ø 200 th. 0,4 mm - Du Ø 80 jusqu'au Ø 200 ép. 0,4 mm

## CURVA 90° - 90° ELBOW - COUDE À 90°

Cod. / Code / Réf.	N°	Ø	H	H1	D	N°SET.
MPGC60/90	2	*60	157	254	199	3
MPGC80/90	2	*80	178	277	222	3
MPGC100/90	2	*100	198	293	238	3
MPGC120/90	2	*120	213	307	252	3
MPGC130/90	2	*130	227	321	266	3
MPGC140/90	2	*140	236	329	274	3
MPGC150/90	2	*150	246	339	284	3
MPGC160/90	2	160	256	349	294	3
MPGC180/90	2	180	276	369	314	3
MPGC200/90	2	200	300	402	347	3
MPGC220/90	2	220	327	431	376	3
MPGC250/90	2	250	340	441	386	3
MPGC300/90	2	300	390	483	428	3
MPGC350/90	1	350	461	572	517	4
MPGC400/90	1	400	553	706	651	4
MPGC450/90	1	450	642	833	778	5
MPGC500/90	1	500	760	929	875	5

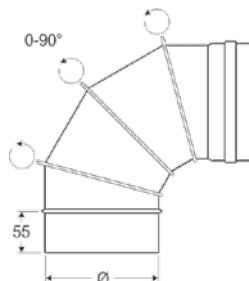


Dal Ø 80 al Ø 200 Sp. 0,4 mm - From Ø 80 to Ø 200 th. 0,4 mm - Du Ø 80 jusqu'au Ø 200 ép. 0,4 mm

\* Guarnizione inclusa / Gasket included / Joint d'étanchéité compris

**CURVA REGOLABILE (0 - 90°) - ADJUSTABLE ELBOW (0 - 90°) - COUDE ORIENTABLE (0 - 90°)**

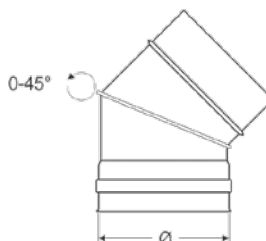
Cod. / Code / Réf.	Ø
MPGCREG80	*80
MPGCREG100	*100
MPGCREG120	*120
MPGCREG130	*130
MPGCREG140	*140
MPGCREG150	*150
MPGCREG160	160
MPGCREG180	180
MPGCREG200	200
MPGCREG220	220
MPGCREG250	250
MPGCREG300	300



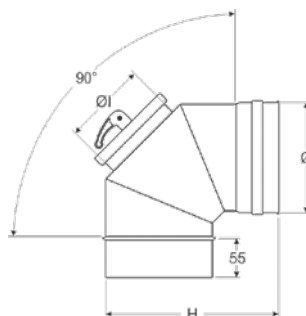
Dal Ø 80 al Ø 200 Sp. 0,4 mm - From Ø 80 to Ø 200 th. 0,4 mm - Du Ø 80 jusqu'au Ø 200 ép. 0,4 mm

**CURVA REGOLABILE A DUE SETTORI (0 - 45°) - TWO PIECES ADJUSTABLE ELBOW (0 - 45°) - COUDE ORIENTABLE À DEUX SECTEURS (0 - 45°)**

Cod. / Code / Réf.	Ø
MPGCREG140-2S	*140
MPGCREG150-2S	*150
MPGCREG160-2S	160
MPGCREG180-2S	180
MPGCREG200-2S	200
MPGCREG220-2S	220
MPGCREG250-2S	250
MPGCREG300-2S	300

**CURVA 90° CON ISPEZIONE - 90° ELBOW WITH INSPECTION DOOR - COUDE À 90° AVEC TRAPPE DE VISITE**

Cod. / Code / Réf.	Ø	H	Øi	N° SET
MPGC80/90ISP	*80	223	80	3
MPGC100/90ISP	*100	194	80	3
MPGC120/90ISP	*120	221	80	3
MPGC130/90ISP	*130	237	80	3
MPGC140/90ISP	*140	236	80	3
MPGC150/90ISP	*150	243	80	3
MPGC160/90ISP	160	256	80	3
MPGC180/90ISP	180	283	150	3
MPGC200/90ISP	200	298	150	3
MPGC250/90ISP	250	346	150	3

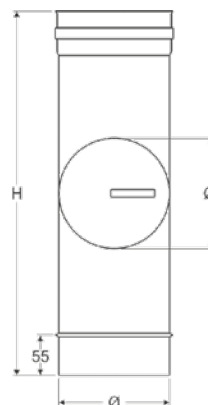


\* **Guarnizione inclusa** / Gasket included / Joint d'étanchéité compris



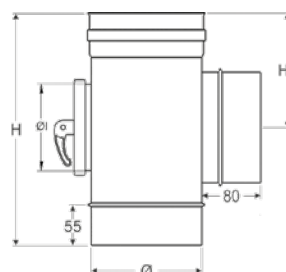
**MODULO D'ISPEZIONE CON TAPPO TONDO - ELEMENT WITH ROUND INSPECTION DOOR - ÉLÉMENT AVEC TRAPPE DE VISITE RONDE**

Cod. / Code / Réf.	Ø	H	Øi
MPGISP80/90	*80	210	80
MPGISP100/90	*100	245	100
MPGISP120/90	*120	305	120
MPGISP130/90	*130	305	130
MPGISP140/90	*140	315	140
MPGISP150/90	*150	315	150
MPGISP160/90	160	315	160
MPGISP180/90	180	495	180
MPGISP200/90	200	495	200
MPGISP220/90	220	495	200
MPGISP250/90	250	495	200
MPGISP300/90	300	495	250
MPGISP350/90	350	495	250
MPGISP400/90	400	495	250
MPGISP450/90	450	495	250
MPGISP500/90	500	495	250



**T 90° CON ISPEZIONE - 90° TEE WITH INSPECTION DOOR - TÉ À 90° AVEC TRAPPE DE VISITE**

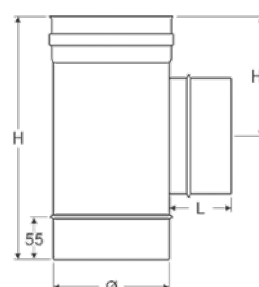
Cod. / Code / Réf.	Ø	H	H1	Øi
MPGT80/90M-ISP	*80	210	105	80
MPGT100/90M-ISP	*100	245	120	80
MPGT120/90M-ISP	*120	305	150	80
MPGT130/90M-ISP	*130	305	150	80
MPGT140/90M-ISP	*140	315	155	100
MPGT150/90M-ISP	*150	315	155	100
MPGT160/90M-ISP	160	315	155	100
MPGT180/90M-ISP	180	495	245	150
MPGT200/90M-ISP	200	495	245	150
MPGT250/90M-ISP	250	495	245	150



**NOTA: Su richiesta Derivazione F / NOTE: Female connection on request / NOTE: Connexion femelle sur demande**

**T 90° DERIVAZIONE MASCHIO - 90° MALE TEE - TÉ À 90° MÂLE**

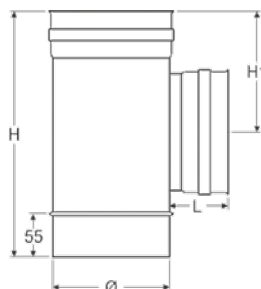
Cod. / Code / Réf.	N°	Ø	H	H1	L
MPGT60/90M	1	*60	240	120	96
MPGT80/90M	2	*80	210	102	80
MPGT100/90M	2	*100	245	120	80
MPGT120/90M	1	*120	305	150	80
MPGT130/90M	1	*130	305	150	80
MPGT140/90M	1	*140	315	155	80
MPGT150/90M	1	*150	315	155	80
MPGT160/90M	1	160	315	155	80
MPGT180/90M	1	180	495	245	80
MPGT200/90M	1	200	495	245	80
MPGT220/90M	1	220	495	245	80
MPGT250/90M	1	250	495	245	80
MPGT300/90M	1	300	495	245	80
MPGT350/90M	1	350	495	245	80
MPGT400/90M	1	400	595	295	80
MPGT450/90M	1	450	795	395	85
MPGT500/90M	1	500	955	475	160



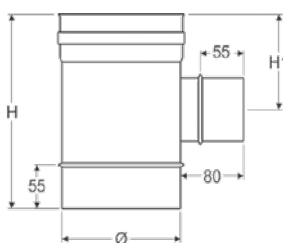
**\* Guarnizione inclusa / Gasket included / Joint d'étanchéité compris**

**T 90° DERIVAZIONE FEMMINA - 90° FEMALE TEE - TÉ À 90° FEMELLE**

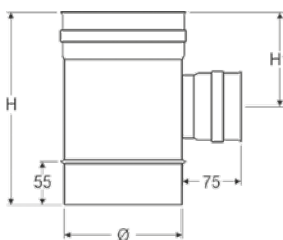
Cod. / Code / Réf.	N°	Ø	H	H1	L
MPGT80/90F	2	*80	210	102	75
MPGT100/90F	2	*100	245	120	75
MPGT120/90F	1	*120	305	150	75
MPGT130/90F	1	*130	305	150	75
MPGT140/90F	1	*140	315	155	75
MPGT150/90F	1	*150	315	155	75
MPGT160/90F	1	160	315	155	75
MPGT180/90F	1	180	495	245	75
MPGT200/90F	1	200	495	245	75
MPGT220/90F	1	220	495	245	75
MPGT250/90F	1	250	495	245	75
MPGT300/90F	1	300	495	245	75
MPGT350/90F	1	350	495	245	75
MPGT400/90F	1	400	595	295	75
MPGT450/90F	1	450	795	395	80
MPGT500/90F	1	500	955	475	155

**T 90° ATTACCO RIDOTTO MASCHIO - 90° REDUCING MALE TEE - TÉ À 90° REDUIT MÂLE**

Cod. / Code / Réf.	Ø	H	H1
MPGTR100-80M	*100	210	102
MPGTR120-80M	*120	245	120
MPGTR130-80M	*130	245	120
MPGTR140-80M	*140	245	120
MPGTR150-80M	*150	245	120
MPGTR160-80M	160	245	120
MPGTR180-80M	180	245	120
MPGTR200-80M	200	245	120
MPGTR220-80M	220	245	120
MPGTR250-80M	250	245	120
MPGTR300-80M	300	245	120

**T 90° ATTACCO RIDOTTO FEMMINA - 90° REDUCING FEMALE TEE - TÉ À 90° REDUIT FEMELLE**

Cod. / Code / Réf.	Ø	H	H1
MPGTR100-80F	*100	210	102
MPGTR120-80F	*120	245	120
MPGTR130-80F	*130	245	120
MPGTR140-80F	*140	245	120
MPGTR150-80F	*150	245	120
MPGTR160-80F	160	245	120
MPGTR180-80F	180	245	120
MPGTR200-80F	200	245	120
MPGTR220-80F	220	245	120
MPGTR250-80F	250	245	120
MPGTR300-80F	300	245	120

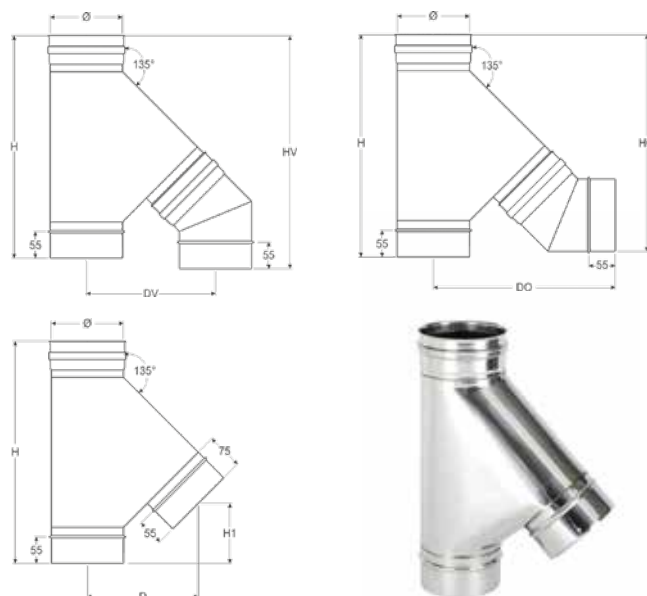


\* Guarnizione inclusa / Gasket included / Joint d'étanchéité compris



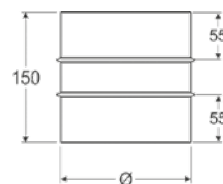
## T 135° DERIVAZIONE MASCHIO - 135° MALETEE - TÉ À 135° MÂLE

Cod. / Code / Réf.	Ø	H	H1	D	DO	HO	DV	HV
MPGT80/135	*80	365	98	169	288	332	186	384
MPGT100/135	*100	392	110	186	325	373	227	421
MPGT120/135	*120	421	112	203	344	404	239	448
MPGT130/135	*130	435	116	212	347	417	245	454
MPGT140/135	*140	449	119	221	359	434	255	468
MPGT150/135	*150	463	123	229	376	453	267	487
MPGT160/135	160	477	127	238	392	472	279	505
MPGT180/135	180	506	134	255	416	506	299	533
MPGT200/135	200	534	141	272	435	538	317	556
MPGT220/135	220	562	148	289	464	574	339	590
MPGT250/135	250	605	158	314	495	623	367	627
MPGT300/135	300	675	176	357	551	707	415	694
MPGT350/135	350	746	194	400	621	796	469	774
MPGT400/135	400	817	211	442	678	880	517	841
MPGT450/135	450	980	218	497	841	1107	617	1106
MPGT500/135	500	980	204	537	898	1153	663	1138



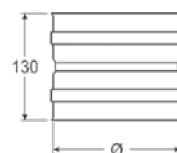
## TRONCHETTO MASCHIO-MASCHIO - MALE-MALE COUPLER - MANCHETTE MÂLE-MÂLE

Cod. / Code / Réf.	Ø
MPGTMM60	60
MPGTMM80	80
MPGTMM100	100
MPGTMM120	120
MPGTMM130	130
MPGTMM140	140
MPGTMM150	150
MPGTMM160	160
MPGTMM180	180
MPGTMM200	200
MPGTMM220	220
MPGTMM250	250
MPGTMM300	300
MPGTMM350	350
MPGTMM400	400
MPGTMM450	450
MPGTMM500	500



## TRONCHETTO FEMMINA-FEMMINA - FEMALE-FEMALE COUPLER - MANCHETTE FEMELLE-FEMELLE

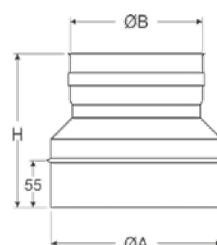
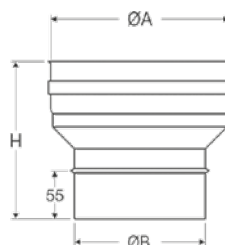
Cod. / Code / Réf.	Ø
MPGTF60	*60
MPGTF80	*80
MPGTF100	*100
MPGTF120	*120
MPGTF130	*130
MPGTF140	*140
MPGTF150	*150
MPGTF160	160
MPGTF180	180
MPGTF200	200
MPGTF220	220
MPGTF250	250
MPGTF300	300
MPGTF350	350
MPGTF400	400
MPGTF450	450
MPGTF500	500



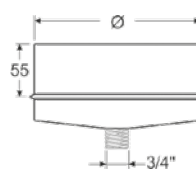
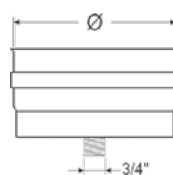
\* Guarnizione inclusa / Gasket included / Joint d'étanchéité compris

**RIDUZIONE / MAGGIORAZIONE - REDUCER / INCREASER - RÉDUCTION / AUGMENTATION**

Cod. Riduz. / Reduc. Code / Réf. Reduc.	Cod. Magg. / Incr. Cod. / Réf. Augm.	ØA	ØB	H
MPGM60/80FM	MPGM60/80	80	60	167
MPGM80/100FM	MPGM80/100	100	80	180
MPGM80/120FM	MPGM80/120	120	80	180
MPGM80/130FM	MPGM80/130	130	80	180
MPGM80/140FM	MPGM80/140	140	80	180
MPGM80/150FM	MPGM80/150	150	80	180
MPGM80/160FM	MPGM80/160	160	80	180
MPGM100/120FM	MPGM100/120	120	100	180
MPGM100/130FM	MPGM100/130	130	100	180
MPGM100/140FM	MPGM100/140	140	100	180
MPGM100/150FM	MPGM100/150	150	100	180
MPGM100/160FM	MPGM100/160	160	100	180
MPGM120/130FM	MPGM120/130	130	120	150
MPGM120/140FM	MPGM120/140	140	120	180
MPGM120/150FM	MPGM120/150	150	120	180
MPGM120/160FM	MPGM120/160	160	120	180
MPGM130/140FM	MPGM130/140	140	130	150
MPGM130/150FM	MPGM130/150	150	130	180
MPGM130/160FM	MPGM130/160	160	130	180
MPGM140/150FM	MPGM140/150	150	140	150
MPGM140/160FM	MPGM140/160	160	140	180
MPGM150/160FM	MPGM150/160	160	150	150
MPGM150/180FM	MPGM150/180	180	150	180
MPGM150/200FM	MPGM150/200	200	150	180
MPGM160/180FM	MPGM160/180	180	180	180
MPGM160/200FM	MPGM160/200	200	180	180
MPGM180/200FM	MPGM180/200	200	180	180
MPGM180/220FM	MPGM180/220	220	180	180
MPGM180/250FM	MPGM180/250	250	180	180
MPGM200/220FM	MPGM200/220	220	200	180
MPGM200/250FM	MPGM200/250	250	200	180
MPGM200/300FM	MPGM200/300	300	200	180
MPGM220/250FM	MPGM220/250	250	220	180
MPGM250/300FM	MPGM250/300	300	250	180
MPGM250/350FM	MPGM250/350	350	250	180
MPGM300/350FM	MPGM300/350	350	300	180
MPGM300/400FM	MPGM300/400	400	300	180
MPGM350/400FM	MPGM350/400	400	350	180
MPGM400/500FM	MPGM400/500	500	400	180


**RACCOGLI CONDENSA - DRAIN PLUG - BOUCHON DE CONDENSATION**

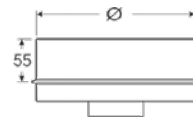
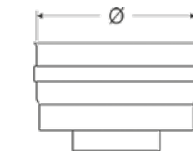
Cod. Maschio / Male code / Réf. Mâle	Cod. Femmina / Female Code / Réf. Femelle	Ø
	MPGRC60	*60
MPCON80M	MPGRC80	*80
MPCON100M	MPGRC100	*100
MPCON120M	MPGRC120	*120
MPCON130M	MPGRC130	*130
MPCON140M	MPGRC140	*140
MPCON150M	MPGRC150	*150
MPCON160M	MPGRC160	160
MPCON180M	MPGRC180	180
MPCON200M	MPGRC200	200
MPCON220M	MPGRC220	220
MPCON250M	MPGRC250	250
MPCON300M	MPGRC300	300
MPCON350M	MPGRC350	350
MPCON400M	MPGRC400	400
MPCON450M	MPGRC450	450
MPCON500M	MPGRC500	500



**GUARNIZIONE H = 9mm - GASKET H = 9mm - JOINT D'ÉTANCHÉITÉ H = 9mm**  
 \* **Guarnizione inclusa / Gasket included / Joint d'étanchéité compris**

## TAPPO CON MANIGLIA - DRAIN PLUG WITH HANDLE - BOUCHON DE CONDENSATION ÉTANCHE

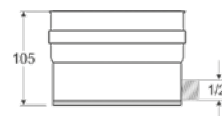
Cod. Maschio / Male code / Réf. Mâle	Cod. Femmina / Female Code/ Réf. Femelle	Ø
MPMAN80M	MPGTM80	*80
MPMAN100M	MPGTM100	*100
MPMAN120M	MPGTM120	*120
MPMAN130M	MPGTM130	*130
MPMAN140M	MPGTM140	*140
MPMAN150M	MPGTM150	*150
MPMAN160M	MPGTM160	160
MPMAN180M	MPGTM180	180
MPMAN200M	MPGTM200	200
MPMAN220M	MPGTM220	220
MPMAN250M	MPGTM250	250
MPMAN300M	MPGTM300	300
MPMAN350M	MPGTM350	350
MPMAN400M	MPGTM400	400
MPMAN450M	MPGTM450	450
MPMAN500M	MPGTM500	500



GUARNIZIONE H = 9mm - GASKET H = 9mm - JOINT D'ÉTANCHÉITÉ H= 9mm

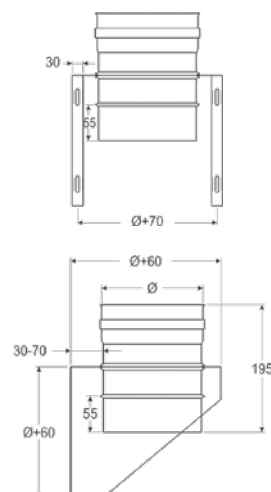
## RACCOGLI CONDENSA PER COLLETTORE - LATERAL DRAIN PLUG - BOUCHON DE CONDENSATION AVEC ÉVACUATION LATÉRALE

Cod. / Code / Réf.	Ø
MPGRC80COL	*80
MPGRC100COL	*100
MPGRC120COL	*120
MPGRC130COL	*130
MPGRC140COL	*140
MPGRC150COL	*150
MPGRC160COL	160
MPGRC180COL	180
MPGRC200COL	200
MPGRC220COL	220
MPGRC250COL	250
MPGRC300COL	300
MPGRC350COL	350
MPGRC400COL	400



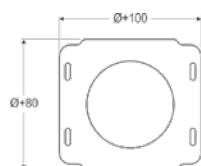
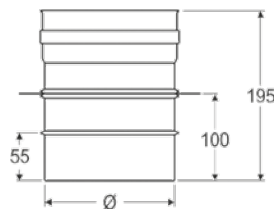
## SUPPORTO A MURO - WALL SUPPORT - SUPPORT MURAL

Cod. / Code / Réf.	Ø
MPGSUP80	*80
MPGSUP100	*100
MPGSUP120	*120
MPGSUP130	*130
MPGSUP140	*140
MPGSUP150	*150
MPGSUP160	160
MPGSUP180	180
MPGSUP200	200
MPGSUP220	220
MPGSUP250	250
MPGSUP300	300
MPGSUP350	350
MPGSUP400	400
MPGSUP450	450
MPGSUP500	500



\* Guarnizione inclusa / Gasket included / Joint d'étanchéité compris

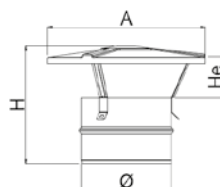
Cod. / Code / Réf.	Ø
MPGSOL80	*80
MPGSOL100	*100
MPGSOL120	*120
MPGSOL130	*130
MPGSOL140	*140
MPGSOL150	*150
MPGSOL160	160
MPGSOL180	180
MPGSOL200	200
MPGSOL220	220
MPGSOL250	250
MPGSOL300	300
MPGSOL350	350
MPGSOL400	400
MPGSOL450	450
MPGSOL500	500



Diametri maggiori su richiesta - Bigger diameters upon request - Diamètres plus grands sur demande

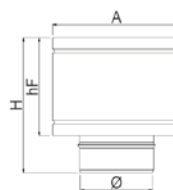
COMIGNOLO CINESE - CHINESE CAP - CHAPEAU CHINOIS

Cod. Maschio / Male code / Réf. Mâle	Cod. Femmina / Female Code / Réf. Femelle	Ø	H	A	He
MPGCIN60		60	185	180	50
MPGCIN80	MPCIN80	80	185	180	50
MPGCIN100	MPCIN100	100	205	230	70
MPGCIN120	MPCIN120	120	205	265	70
MPGCIN130	MPCIN130	130	205	265	70
MPGCIN140	MPCIN140	140	210	265	75
MPGCIN150	MPCIN150	150	210	265	75
MPGCIN160	MPCIN160	160	215	265	80
MPGCIN180	MPCIN180	180	225	320	90
MPGCIN200	MPCIN200	200	235	320	100
MPGCIN220	MPCIN220	220	250	400	115
MPGCIN250	MPCIN250	250	260	400	125
MPGCIN300	MPCIN300	300	285	500	150
MPGCIN350	MPCIN350	350	310	600	175
MPGCIN400	MPCIN400	400	340	600	200
MPGCIN450	MPCIN450	450	260	630	100
MPGCIN500	MPCIN500	500	260	680	100



COMIGNOLO ANTIVENTO - WINDPROOF CAP - CHAPEAU ANTI-INTEMPÉRIE

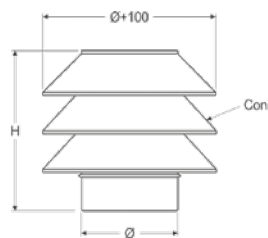
Cod. Maschio / Male code / Réf. Mâle	Cod. Femmina / Female Code / Réf. Femelle	Ø	H	A	Hf
MPGANT80	MPAV80	80	240	185	165
MPGANT100	MPAV100	100	240	185	165
MPGANT120	MPAV120	120	240	220	165
MPGANT130	MPAV130	130	240	220	165
MPGANT140	MPAV140	140	260	260	200
MPGANT150	MPAV150	150	260	260	200
MPGANT160	MPAV160	160	280	260	200
MPGANT180	MPAV180	180	280	300	200
MPGANT200	MPAV200	200	320	310	250
MPGANT220	MPAV220	220	340	370	250
MPGANT250	MPAV250	250	340	420	250
MPGANT300	MPAV300	300	400	470	310
MPGANT350	MPAV350	350	400	530	310
MPGANT400	MPAV400	400	400	610	310
MPGANT450	MPAV450	450	400	650	310
MPGANT500	MPAV500	500	400	700	310



\* Guarnizione inclusa / Gasket included / Joint d'étanchéité compris

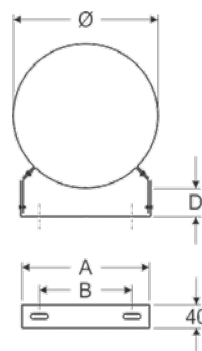
**COMIGNOLO TORRINO - TOWER CAP - CHAPEAU DONJON**

Cod. Maschio / Male code / Réf. Mâle	Cod. Femmina / Female Code/ Réf. Femelle	Ø	H	N° CONI
MPGTOR80	MPTOR80	80	330	3
MPGTOR100	MPTOR100	100	330	3
MPGTOR120	MPTOR120	120	330	3
MPGTOR130	MPTOR130	130	330	3
MPGTOR140	MPTOR140	140	330	3
MPGTOR150	MPTOR150	150	330	3
MPGTOR160	MPTOR160	160	330	3
MPGTOR180	MPTOR180	180	390	4
MPGTOR200	MPTOR200	200	390	4
MPGTOR220	MPTOR220	220	390	4
MPGTOR230	MPTOR230	230	390	4
MPGTOR250	MPTOR250	250	390	4
MPGTOR300	MPTOR300	300	450	5
MPGTOR350	MPTOR350	350	450	5



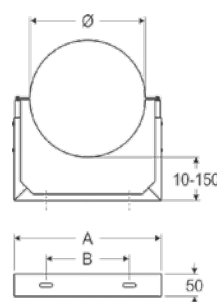
**STAFFA DI FISSAGGIO A PARETE REGOLABILE DA 50 A 80MM - ADJUSTABLE WALL BRACKET FROM 50 TO 80MM - COLLIER DE FIXATION MURAL RÉGLABLE DE 50 À 80MM**

Cod. / Code / Réf.	Ø	A	B	D
MPS80	80	107	65	50-80
MPS100	100	114	67	50-80
MPS120	120	128	68	50-80
MPS130	130	130	70	50-80
MPS140	140	145	85	50-80
MPS150	150	148	86	50-80
MPS160	160	154	95	50-80
MPS180	180	172	110	50-80
MPS200	200	185	121	50-80
MPS220	220	205	129	50-80
MPS230	230	205	129	50-80
MPS250	250	220	155	50-80
MPS300	300	253	190	50-80
MPS350	350	290	228	50-80
MPS400	400	330	230	50-80
MPS450	450	360	296	50-80
MPS500	500	400	285	50



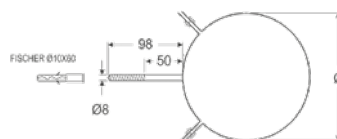
**STAFFA DI FISSAGGIO A PARETE REGOLABILE DA 10 A 150MM - ADJUSTABLE WALL BRACKET FROM 10 TO 150MM - COLLIER DE FIXATION MURAL RÉGLABLE DE 10 À 150MM**

Cod. / Code / Réf.	Ø	A	B
MPSREG80	80	129	78
MPSREG100	100	149	94
MPSREG120	120	163	103
MPSREG130	130	180	117
MPSREG140	140	200	118
MPSREG150	150	200	134
MPSREG160	160	210	135
MPSREG180	180	230	170
MPSREG200	200	250	179
MPSREG220	220	270	206
MPSREG250	250	300	175
MPSREG300	300	350	245
MPSREG350	350	400	320
MPSREG400	400	450	376
MPSREG450	450	500	424
MPSREG500	500	550	427



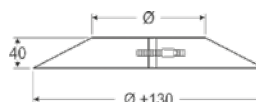
\* **Guarnizione inclusa** / Gasket included / Joint d'étanchéité compris

Cod. / Code / Réf.	N°	Ø
MPST60	1	60
MPST80	2	80
MPST100	2	100
MPST120	2	120
MPST130	2	130
MPST140	2	140
MPST150	2	150
MPST160	2	160
MPST180	2	180
MPST200	2	200



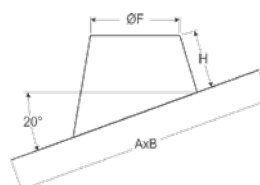
GREMBIULINA DITENUTA - STORM COLLAR - COLLET ANTI-INTEMPÉRIE

Cod. / Code / Réf.	Ø
MPGRE80	80
MPGRE100	100
MPGRE120	120
MPGRE130	130
MPGRE140	140
MPGRE150	150
MPGRE160	160
MPGRE180	180
MPGRE200	200
MPGRE220	220
MPGRE250	250
MPGRE300	300
MPGRE350	350
MPGRE400	400
MPGRE450	450
MPGRE500	500



FALDALE PER TETTI INCLINATI CON BASE IN PIOMBO - FLASHING FOR SLOPED ROOFS WITH LEAD BASE - SOLIN DE TOIT PENTU AVEC BASE EN PLOMB

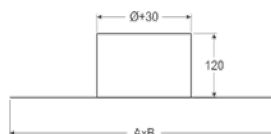
Cod. / Code / Réf.	Ø	ØF	A	B	H
MPFI80	80	110	500	700	180
MPFI100	100	130	500	700	180
MPFI120	120	160	500	700	180
MPFI130	130	160	500	700	180
MPFI140	140	180	500	700	180
MPFI150	150	180	500	700	180
MPFI160	160	180	500	700	180
MPFI180	180	210	700	1000	180
MPFI200	200	230	700	1000	180
MPFI220	220	260	700	1000	180
MPFI250	250	280	700	1000	180
MPFI300	300	330	700	1000	180
MPFI350	350	380	1000	1000	180
MPFI400	400	430	1000	1000	120





## FALDALE PERTETTI PIANI - FLASHING FOR FLAT ROOFS - SOLINTOITSTERRASSE

Cod. / Code / Réf.	Ø	A	B
MPFP80	80	300	300
MPFP100	100	300	300
MPFP120	120	310	310
MPFP130	130	310	310
MPFP140	140	330	330
MPFP150	150	330	330
MPFP160	160	330	330
MPFP180	180	380	380
MPFP200	200	380	380
MPFP220	220	400	400
MPFP250	250	430	430
MPFP300	300	480	480
MPFP350	350	490	490
MPFP400	400	580	580



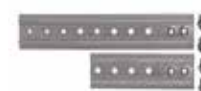
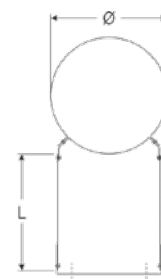
## FASCETTA STRINGITUBO - CLAMP - COLLIER DE JONCTION SIMPLE

Cod. / Code / Réf.	Ø
MPFASC60	60
MPFASC80	80
MPFASC100	100
MPFASC120	120
MPFASC130	130
MPFASC140	140
MPFASC150	150
MPFASC160	160
MPFASC180	180
MPFASC200	200
MPFASC220	220
MPFASC250	250
MPFASC300	300
MPFASC350	350
MPFASC400	400
MPFASC450	450
MPFASC500	500



## PROLUNGA PER MPS - MPS EXTENSION - RALLONGE POUR MPS

Cod. / Code / Réf.	L
PROLMPS105I	105mm
PROLMPS205I	205mm



## GUARNIZIONE - GASKET - JOINT D'ÉTANCHÉITÉ

Cod. / Code / Réf. H12	Cod. / Code / Réf. H9	Ø
G3L60	G3L60H9	60
G3L80	G3L80H9	80
G3L100	G3L100H9	100
G3L120	G3L120H9	120
G3L130	G3L130H9	130
G3L140	G3L140H9	140
G3L150	G3L150H9	150
G3L160	G3L160H9	160
G3L180	G3L180H9	180
G3L200	G3L200H9	200
G3L220	G3L220H9	220
G3L250	G3L250H9	250
G3L300	G3L300H9	300
G3L350	G3L350H9	350
G3L400	G3L400H9	400
G3L450	G3L450H9	450
G3L500	G3L500H9	500

